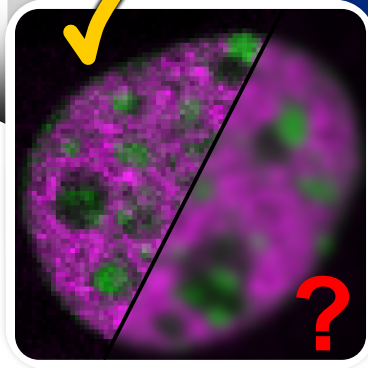
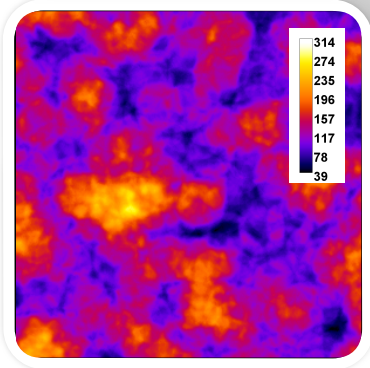
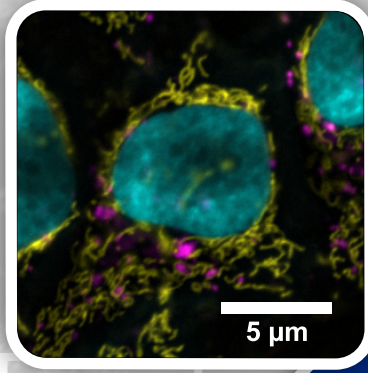
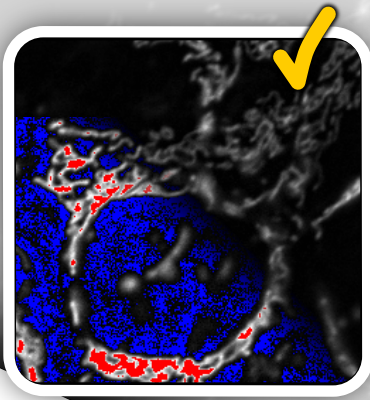


Scientific Image Editing & Figure Creation



- 2-day (á 6 hours) hands-on online workinar (live via Zoom)
- Main target group:
 - Undergrads, PhD-students, Postdocs from Life Sciences
- Difficulty level: easy - medium
- Used software: Fiji (ImageJ bundle) and Inkscape
- No prior software knowledge required
- Learning objectives:
 - avoid data alteration by best practice image handling
 - good scientific practice of image editing for figures
 - metadata, image scaling and scale bars
 - proper use of cropping, rotations, insets and digital zoom
 - combine *Fiji/ImageJ* and *Inkscape* to efficiently create figures

BioVoxxel

Dr. Jan Brocher
phone: 49 (0)176 705 746 81
web: <https://www.biovoxxel.de>
mail: jan.brocher@biovoxxel.de

- Requirements:
 - Computer with possibility to install Fiji and Inkscape
 - Windows / Mac / Linux
 - stable internet connection
 - best 2 monitors
 - a computer mouse
 - microphone or headset



Image i integrity
image integrity

